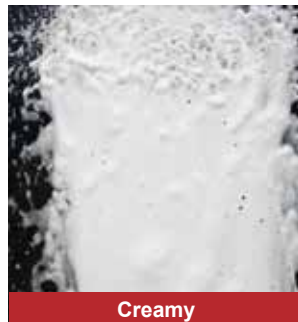
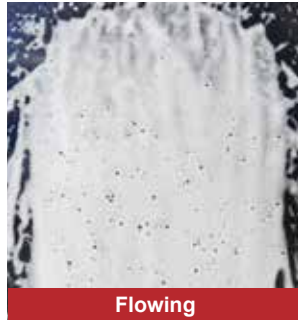


# Detergent Foam Spray Unit

**AWACart**

Flat Spray



- A portable spray unit with a specialized low-pressure foam nozzle that converts detergent into fine foam for spraying, minimizing splashing.
- By replacing the nozzle tip, the spray pattern<sup>\*1</sup> can be switched between a fan-shaped spray and an optional solid stream spray.

<sup>\*1</sup> Standard  Flat spray

<sup>\*1</sup> Optional  Solid stream

- Adjusting spray capacity with the needle valve and air consumption with the throttle valve can change foam properties, as shown on the left. (The adjustment depends on factors such as detergent type and concentration.)

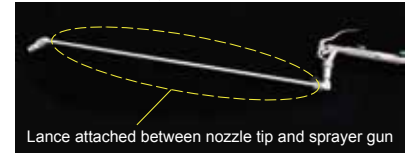
## [APPLICATIONS]

- Cleaning: conveyors, food processing machinery, factory walls

Standard Spray Gun

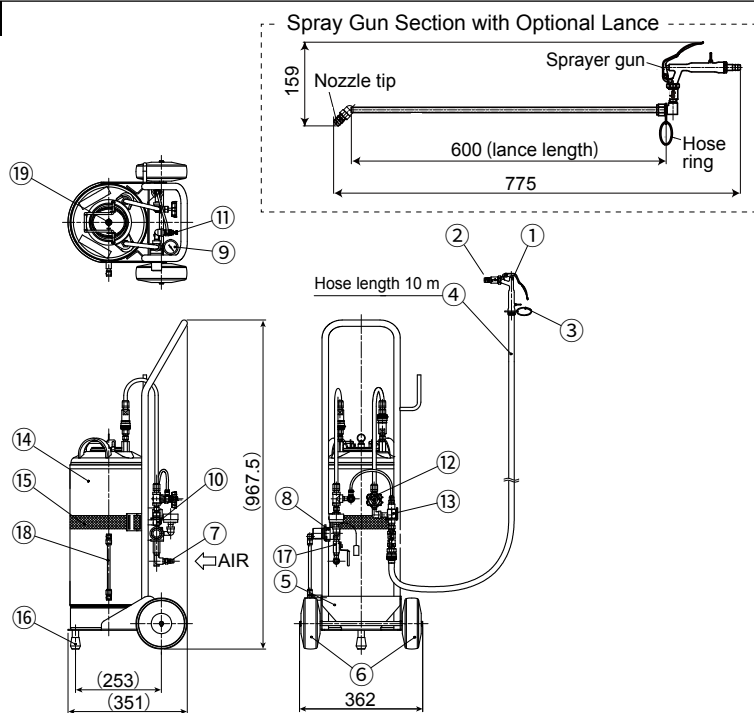


Optional Lance Type



The parts which come in contact with the liquids are resistant to strong alkaline solution.

## DRAWING



**WEIGHT** Approx. 13 kg (empty tank)

Components	Materials
① Sprayer gun	S316L
② Nozzle tip	S303
③ Hose ring	S316
④ Hose (10 m)	Polyolefin
⑤ Base	S304
⑥ Caster	Urethane, etc.
⑦ Coupler plug	S304
⑧ Air regulator	Aluminum alloy, etc.
⑨ Pressure gauge (1.0 MPa)	Brass, etc.
⑩ Check valve	S303, EPDM
⑪ Throttle valve	S304, PP, EPDM
⑫ Needle valve	S316
⑬ Mixing adaptor	S304
⑭ Pressure tank	S304
⑮ Tank fastening belt	PP
⑯ Rubber feet	EPDM
⑰ Ball valve	Plated brass
⑱ Liquid level gauge	S316, FEP
⑲ Relief valve (0.59 MPa)	Polyacetal, etc.

## SPECIFICATIONS

Air pressure (MPa)	Throttle valve <sup>*2</sup>	Needle valve <sup>*2</sup>	Spray capacity <sup>*3</sup> (L/min)	Air consumption (L/min, Normal)
0.3	Half turn	Half turn	2.0	17
	1 turn		1.8	24
	4 turns		1.6	57

<sup>\*2</sup>) Indicates the number of rotations from the fully closed position. The throttle valve adjusts the air consumption, and the needle valve adjusts the spray capacity.

<sup>\*3</sup>) Spray liquid is tap water. The actual flow rate will vary depending on factors such as the type and concentration of detergent.

## PRESSURE TANK SPECIFICATIONS

Tank capacity	18 liters
Max. operating pressure	0.49 MPa
Relief valve activating pressure	0.59 MPa

## HOW TO ORDER

Please use these product codes for inquiries and orders.

The spray gun section can be selected as either the standard type or lance type, depending on the application.

■ Standard AWACart  
**AWACart-S-A**

■ AWACart with Optional Lance  
**AWACart-S-A-L**