

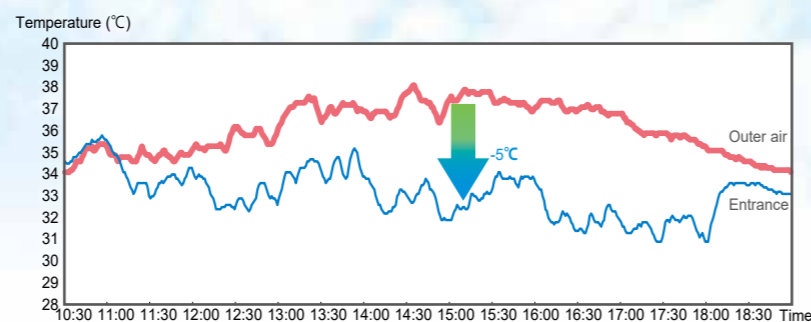
Beat the summer heat with a cool mist.



Cooling Effect of Up to 5°C Outdoors

In outdoor environments where air conditioners are less effective, the system provides a cooling effect of about 5°C in the area where it operates.

A 5°C temperature difference in the heat of summer outdoors can be quite significant.

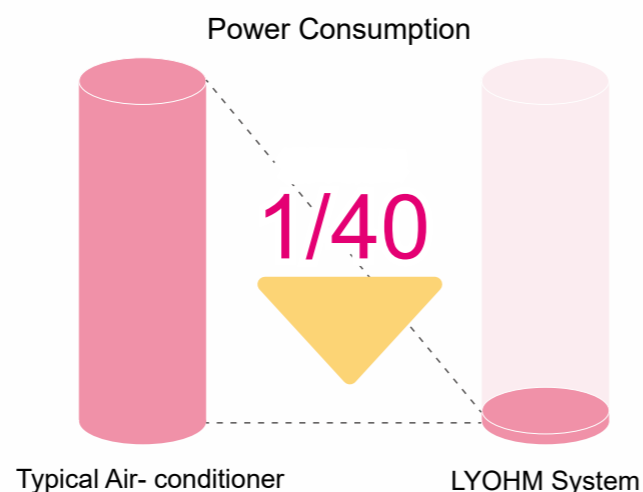


Eco-Friendly, Energy-Saving System

This system lowers ambient temperature using the heat of vaporization of the fog, without emitting exhaust heat, and operates with minimal energy.

Compared to air conditioners, **the LYOHM System consumes approximately 1/40 of the power and has operating costs around 1/10.**

It is an energy-efficient and clean cooling system with minimal CO₂ emissions.



Non-wetting Fog

- Cools off the summer heat in cities
- Provides energy-saving cooling for the heat island phenomenon
- Cools outdoor spaces at low costs
- Provides an outdoor cooling system

Semi Dry Fog® LYOHM SYSTEM
(Fine droplets of 20µm)



LYOHM SYSTEM is not the typical lightweight misting gadget; but an outdoor cooling system that can be (semi-permanently) installed as a part of the building structure.

Please feel free to send any inquiry, request for informatio to the contact below.

What's the LYOHM SYSTEM?

A new kind of fog developed by the nozzle specialists

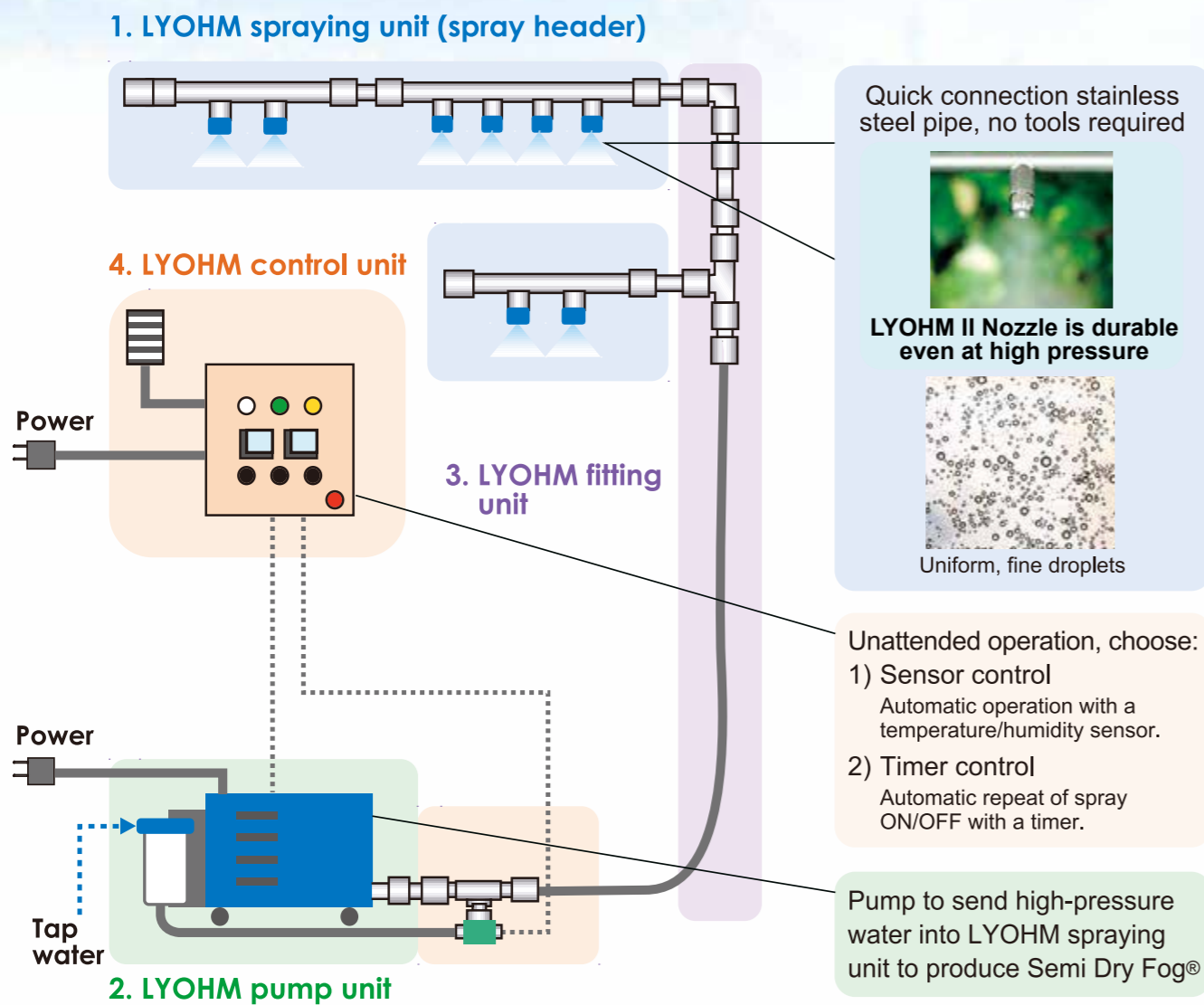
LYOHM SYSTEM is the cooling system that fights global warming by producing a large amount of non-wetting "Semi Dry Fog®" with its droplet size of 20-30µm (much finer droplets than those from spray bottle).

In summertime, by installing the header at 3-3.5m height, the system provides very effective cooling performance decreasing the temperature by 3-5°C at most affordable cost, without wetting road surfaces or passersby.

The centerpiece of the LYOHM SYSTEM:

LYOHM Nozzles spray uniform Semi Dry Fog® without streaking. LYOHM Nozzles are innovative, high-precision spray nozzles with high-purity alumina ceramic tips for high wear resistance.

Structure of the LYOHM SYSTEM



*The above flow chart is one example among many.

Installation Examples of LYOHM SYSTEM

In commercial facilities and outdoor restaurants



LOFT in Shibuya, Tokyo (shopping center)



TENMAYA in Okayama (department store)



Restaurant "Amalfi Della Sera"

In outdoor events in summer



Shibuya ward office



IAAF World Championships in Athletics, Osaka 2007



Event "Waku Waku Takarajima"

In train stations, platforms



Universal City station



Hiroshima station



Kure station

For creating cool spots in sport facilities, zoos, outside sports



Arima Royal Golf Club



Tennoji Zoo



Nagai Botanical Garden