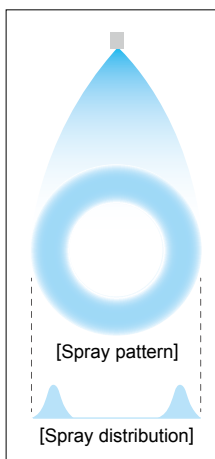


Extremely Fine Fog and Ultra-Low Flow Rate Hollow Cone Spray Nozzles

KBN

Hollow Cone



- Ultra-low flow rate hollow cone spray nozzle with the finest atomization among our hydraulic nozzles.
- Minimal clogging with free passage diameter 1.3–2.6 times bigger than that of conventional nozzles.
- High-purity alumina ceramic tip provides stable performance with longer life even under high pressure conditions.

[STANDARD PRESSURE]

1.0 MPa

[APPLICATIONS]

Cooling: Poultry farms, outside cooling

Humidifying: Air handling units, greenhouses

Spraying: Alcohol, disinfectant

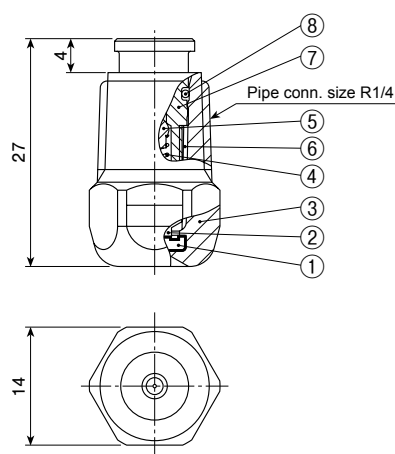
Others: Dust suppression, irrigation for greenhouse

Structure	<ul style="list-style-type: none"> • One-piece plastic nozzle molded around a high-purity ceramic orifice. • Thread is R1/4 (BSPT 1/4 male) or NPT 1/4 male. • All models includes a built-in strainer and check valve.
Material	<ul style="list-style-type: none"> • Nozzle orifice: ceramic • Closer: polyester elastomer • Nozzle body: PA
Weight	• 4 g

Max. operating pressure: 7.0 MPa

DRAWING

Unit: mm



- ①Ceramic orifice ②Closer ③Nozzle body ④Spring (S304)
 ⑤Poppet (NBR) ⑥Strainer screen (S316)
 ⑦Strainer holder (PP) ⑧O-ring (NBR)

[Note] Appearance and dimensions may differ slightly depending on material and nozzle code.

Spray angle code	Spray capacity code	Spray angle (°)				Spray capacity (L/hr)								Mean drop. dia. (μm)	Free pass. dia. (mm)	Strainer mesh size	Nozzle body color
		0.5 MPa	1 MPa	1.3 MPa	2 MPa	0.5 MPa	0.8 MPa	1 MPa	1.3 MPa	2 MPa	3.5 MPa	5 MPa	6 MPa	7 MPa			
80	063	50	80	80	80	1.13	1.72	2.00	2.35	2.99	3.99	4.75	5.19	5.58	35	0.2	200
	125	60	80	80	80	2.29	3.51	4.10	4.84	6.19	8.31	9.94	10.9	11.7	7	0.3	100
	22	65	80	80	80	3.99	6.18	7.25	8.59	11.1	15.0	18.0	19.7	21.3	65	0.4	100

[Note]

1. The spray capacity of the KBN series is listed in liters per hour (L/hr), not in L/min.
2. A check valve which closes and opens at 0.3 MPa is built into all nozzles.
3. KBN series nozzles are not guaranteed for spray angle and spray capacity because of the check valve.

HOW TO ORDER

To inquire about or order a specific nozzle please refer to this coding system.

Example: 1/4M KBN 80 125 TPACVW

1/4M	KBN	80	125	TPACVW
Pipe conn. size*		Spray angle code	Spray capacity code	Material (CV indicates check valve, W indicates strainer)
1/4M			063	
1/4M (NPT)			125	
			22	

**"M" indicates male thread ("R" of the ISO standard), e.g. 1/4M = R1/4 (BSPT 1/4 male).
 In case NPT 1/4 male thread is required, please specify the pipe connection size as 1/4M (NPT).