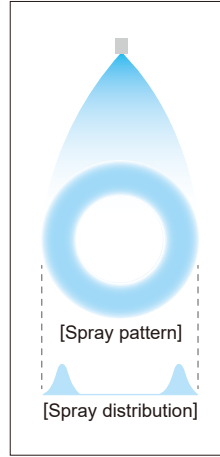


Semi-fine Fog and Low Flow Rate Hollow Cone Spray Nozzles

KKBP

Hollow Cone



- Low flow rate hollow cone spray nozzle.
- Unique whirler design with large free passage diameter minimizes clogging.
- Semi-fine atomization.
- Compact, lightweight design with a small number of parts.
- Maintenance is easy as whirler is detachable.

[STANDARD PRESSURE]
0.3 MPa

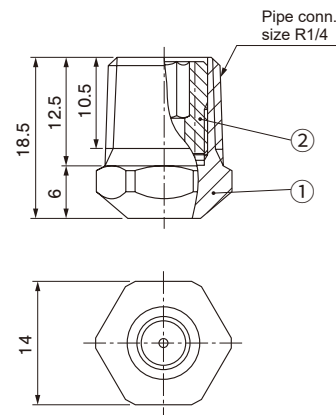
[APPLICATIONS]
Humidifying: Air handling units
Cooling: Gas, metals
Spraying: Chemicals
Snow making (for snow machines)

Structure	• Includes a nozzle body and whirler.
Material	• Nozzle body: S303 • Whirler: S316L equivalent SPECIAL ORDER MATERIAL: S316 or S316L
Weight	• 15g

[Note] Appearance and dimensions may differ slightly depending on material and nozzle code.

DRAWING

Unit: mm



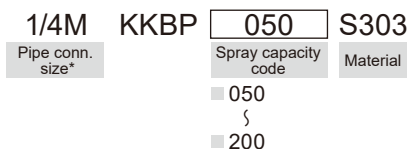
① Nozzle body ② Whirler

Spray capacity code	Spray angle (°)			Spray capacity (L/min)								Mean droplet diameter (µm)	Free passage diameter (mm)
	0.2 MPa	0.3 MPa	1.0 MPa	0.2 MPa	0.3 MPa	0.5 MPa	1 MPa	1.5 MPa	2 MPa	3 MPa	5 MPa		
050	63	65	68	0.41	0.50	0.64	0.89	1.08	1.24	1.51	1.93	160	1.0
060	65	68	70	0.49	0.60	0.77	1.07	1.30	1.49	1.82	2.32	160	1.0
070	60	63	65	0.58	0.70	0.89	1.25	1.52	1.74	2.12	2.71	250	1.2
080	63	65	68	0.66	0.80	1.02	1.43	1.73	1.99	2.42	3.09	250	1.2
100	55	58	60	0.82	1.00	1.28	1.78	2.17	2.49	3.03	3.87	260	1.4
120	58	60	63	0.99	1.20	1.53	2.14	2.60	2.99	3.63	4.64	260	1.4
140	55	58	60	1.15	1.40	1.79	2.50	3.04	3.49	4.24	5.41	360	1.6
160	55	58	60	1.32	1.60	2.05	2.85	3.47	3.98	4.84	6.19	360	1.6
180	50	53	55	1.48	1.80	2.30	3.21	3.90	4.48	5.45	6.96	360	1.8
200	53	55	58	1.65	2.00	2.56	3.57	4.34	4.98	6.05	7.73	360	1.8

HOW TO ORDER

To inquire about or order a specific nozzle please refer to this coding system.

Example: 1/4M KKBP 050 S303



**"M" indicates male thread ("R" of the ISO standard), e.g. 1/4M = R1/4.