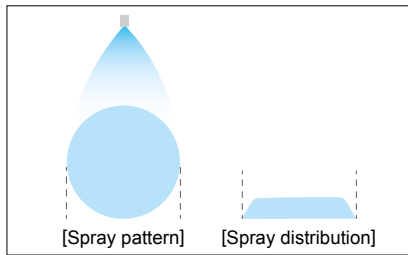
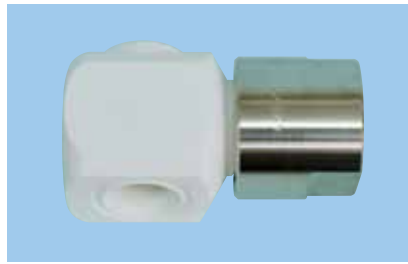


# Clog-Resistant Alumina Ceramic Full Cone Spray Nozzles

Made-to-Order

## AJP-AL92

Clog-resistant full cone nozzle made of highly wear- and chemical-resistant alumina ceramic.



- Full cone spray pattern with a round impact area and uniform distribution.
- Without using a whirler, the liquid is atomized by collision inflow inside the nozzle.
- No-whirler design with a large free passage diameter minimizes clogging.
- Nozzle sprays at a 90° angle to the nozzle inlet. This right angle nozzle is suitable for installation in small spaces.

**[STANDARD PRESSURE]**  
0.2 MPa

### [APPLICATIONS]

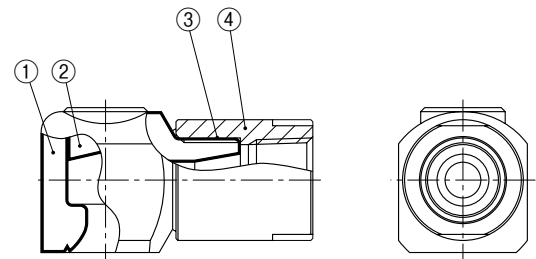
- Spraying slurry
- Absorption tower of flue gas desulfurization equipment
- Spraying water in cooling tower
- Applications where re-circulated water is being used or clogging is a concern

Full Cone

Structure	<ul style="list-style-type: none"> <li>• Alumina ceramic one-piece structure.</li> <li>• No obstructions in the nozzle interior.</li> </ul>
Material	<ul style="list-style-type: none"> <li>• Nozzle body: 92% Alumina</li> <li>• Socket: S316</li> </ul>

The AJP-AL92 series is available with a socket made of S316 to prevent damage to the delicate alumina threads. The S316 socket is female threaded turning the male nozzle thread into a female connection.

### DRAWING



①Nozzle body ②Plate ③Adhesive: Araldite®H ④Socket (S316)

Nozzle thread size	Spray angle (°) at 0.2 MPa	Spray capacity (L/min) at 0.2 MPa	Mean droplet diameter (μm)	Free passage diameter (mm)
R1/2	85 or 90	18.0–50.0	800–1,400	5.1–9.5
R3/4	90	55.0–90.0		9.6–12.9
R1	90	100–150		13.3–16.1
R1½	90	180–250		17.2–21.3

### HOW TO ORDER

IKEUCHI will help select the best model for the specific applications and requirements of each customer. Contact us for more details.