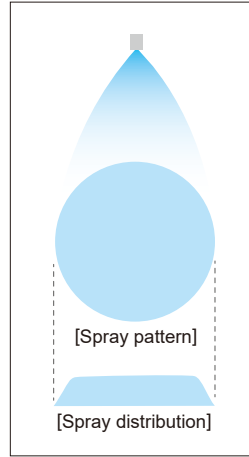


Standard Type Full Cone Spray Nozzles

JJXP-PVDF



- Full cone spray pattern with a round impact area and uniform distribution.
- X-shaped whirler provides a large free passage diameter, minimizing clogging.

[STANDARD PRESSURE]
0.2 MPa

[APPLICATIONS]
 Cleaning: Machinery, screens, tanks, crushed stone, earth and sand
 Cooling: Machinery, tanks
 Spraying: Waste water treatment, aeration, foam breaking, dust suppression, etching, chemicals

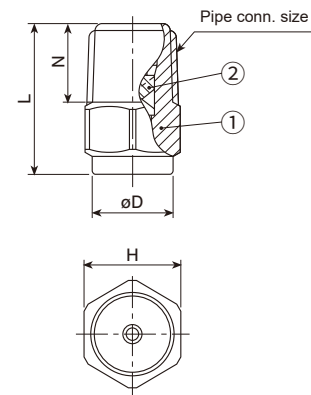
Full Cone

| | |
|-----------|---|
| Structure | • One-piece structure with a press-fitted X-shaped whirler. |
| Material | • PVDF |

| Pipe conn. size | Dimensions (mm) | | | | Weight (g) |
|-----------------|-----------------|----|----|------|------------|
| | L | H | øD | N | |
| R1/8 | 18 | 12 | 11 | 8 | 2.2 |
| R1/4 | 22 | 14 | 12 | 11.5 | 3.8 |

[Note] Appearance and dimensions may differ slightly depending on material and nozzle code.

DRAWING



① Nozzle body ② Whirler

| Spray capacity code | Pipe conn. size | | Spray angle (°) | | | Spray capacity (L/min) | | | | | | | | | Mean droplet diameter (µm) | Free passage diameter (mm) |
|---------------------|-----------------|------|-----------------|---------|---------|------------------------|----------|---------|----------|---------|---------|---------|---------|-------|----------------------------|----------------------------|
| | R1/8 | R1/4 | 0.05 MPa | 0.2 MPa | 0.5 MPa | 0.03 MPa | 0.05 MPa | 0.1 MPa | 0.15 MPa | 0.2 MPa | 0.3 MPa | 0.5 MPa | 0.7 MPa | 1 MPa | | |
| 010 | ○ | ○ | 60 | 65 | 55 | — | 0.53 | 0.73 | 0.88 | 1.00 | 1.18 | 1.45 | 1.67 | 1.93 | 290 | 0.8 |
| 015 | ○ | ○ | 60 | 65 | 55 | — | 0.79 | 1.09 | 1.32 | 1.50 | 1.77 | 2.18 | 2.50 | 2.89 | } | 1.0 |
| 020 | ○ | ○ | 60 | 65 | 55 | — | 1.06 | 1.46 | 1.75 | 2.00 | 2.36 | 2.91 | 3.34 | 3.86 | | 1.5 |
| 025 | ○ | ○ | 60 | 65 | 55 | — | 1.32 | 1.82 | 2.20 | 2.50 | 2.95 | 3.62 | 4.17 | 4.82 | | 1.5 |
| 030 | ○ | ○ | 60 | 65 | 55 | — | 1.59 | 2.18 | 2.63 | 3.00 | 3.54 | 4.36 | 5.00 | 5.79 | 410 | 1.5 |

HOW TO ORDER

To inquire about or order a specific nozzle please refer to this coding system.

Example: 1/8M JJXP 010 PVDF

| | | | |
|------------------|------|---------------------|----------|
| 1/8M | JJXP | 010 | PVDF |
| Pipe conn. size* | | Spray capacity code | Material |
| ■ 1/8M | | ■ 010 | |
| ■ 1/4M | | ∩ | |
| | | ■ 030 | |

*"M" indicates male thread ("R" of the ISO standard), e.g. 1/8M = R1/8.