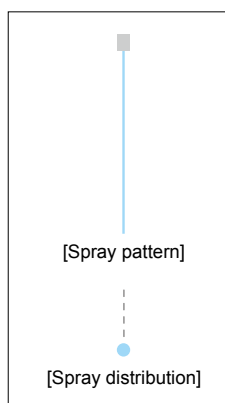


# Convex Round Inlet Solid Stream Jet

**CCRP**  
**CRP**



- High impact solid stream nozzle.
- The cone shaped inlet penetrates further into the supply pipe than regular nozzles. This prevents floating particles from flowing into the nozzle, thereby reducing clogging.
- The CRP series features high-purity alumina ceramic orifice providing stable performance with longer life.

## [STANDARD PRESSURE]

2.0 MPa

## [APPLICATIONS]

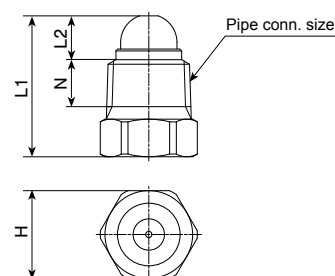
Cleaning: Wire and felt parts of paper making machines, machinery, parts, vehicles, returnable containers, bottles

## CCRP SERIES (all metal)

Structure	• Metal one-piece structure.				
Material	• S303				
Pipe conn. size	Dimensions (mm)				Weight (g)
	L1	L2	H	N	
R1/8	18.5	5.5	12	6	8.5
R1/4	22.5	7	14	7.5	17

[Note] Appearance and dimensions may differ slightly depending on material and nozzle code.

## DRAWING

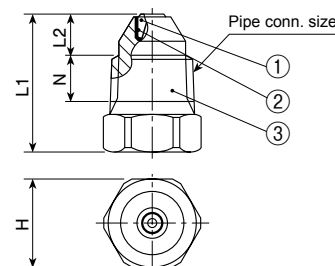


## CRP SERIES (with ceramic orifice)

Structure	• One-piece structure with a high-purity ceramic orifice insert.				
Material	• Nozzle orifice: alumina ceramic • Nozzle body: S303				
Pipe conn. size	Dimensions (mm)				Weight (g)
	L1	L2	H	N	
R1/8	18	5	12	6	7
R1/4	22	6.5	14	7.5	15

[Note] Appearance and dimensions may differ slightly depending on material and nozzle code.

## DRAWING



①Ceramic orifice ②Adhesive: Araldite® ③Nozzle body

Orifice diameter code	Pipe connection size				Spray capacity (L/min)					
	CCRP		CRP		0.3 MPa	0.5 MPa	0.7 MPa	1 MPa	2 MPa	3 MPa
	R1/8	R1/4	R1/8	R1/4						
ø0.5	○	○	○	○	0.20	0.26	0.31	0.37	0.52	0.63
ø0.6	○	○	○	○	0.29	0.37	0.44	0.53	0.74	0.91
ø0.7	○	○	○	○	0.39	0.51	0.60	0.72	1.01	1.24
ø0.8	○	○	○	○	0.51	0.66	0.78	0.94	1.32	1.62
ø0.9	○	○	○	○	0.65	0.84	0.99	1.18	1.67	2.05
ø1.0	○	○	○	○	0.80	1.03	1.22	1.46	2.07	2.53
ø1.1	○	○	○	○	0.97	1.25	1.48	1.77	2.50	3.06
ø1.2	○	○	○	○	1.15	1.49	1.76	2.10	2.98	3.64
ø1.3	○	○	○	○	1.35	1.75	2.07	2.47	3.49	4.28
ø1.4	○	○	○	○	1.57	2.02	2.40	2.86	4.05	4.96
ø1.5	○	○	○	○	1.80	2.32	2.75	3.29	4.65	5.69
ø1.7	○	○	○	○	2.31	2.99	3.53	4.22	5.97	7.31
ø2.0	○	○	○	○	3.20	4.13	4.89	5.84	8.26	10.1

[Note] The above nozzles are manufactured for specific orifice diameters, therefore the spray capacity is not guaranteed.

## HOW TO ORDER

To inquire about or order a specific nozzle please refer to this coding system.

Example: 1/8M CRP ø0.6 AL99-S303

<b>1/8M</b>	<b>CRP</b>	<b>ø0.6</b>	<b>AL99-S303</b>
Pipe conn. size*	Series	Orifice diameter code	Material
1/8M	CRP	ø0.5	AL99-S303: CRP series
1/4M	CCRP	ø	S303: CCRP series
		ø2.0	

\*"M" indicates male thread ("R" of the ISO standard), e.g. 1/8M = R1/8.