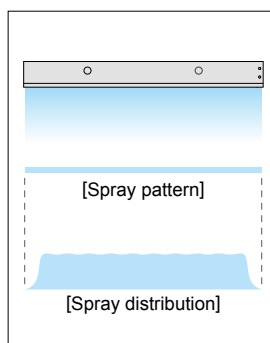


Slit Nozzles

SLNH-H/SLNHA-H



- Water or air sprayed from slit nozzles is uniform in width direction.
- SLNH-H series for liquid spraying with even spray flow distribution. SLNHA-H series for air spraying with even spray impact distribution.
- Thin liquid film spray saves cost for chemicals and water.
- Compact and space-saving design.

[APPLICATIONS]

Blow-off drying, cleaning, developing, etching

Material • S304 or PVC

Series	Slit length ℓ (mm)	Slit opening t (mm)	Effective liquid film width (mm) at 10 mm height	Number of inlets	Thread size		Total length L^2 (mm)	Weight (kg)	
					Inlet	Mounting		S304	PVC
SLNH-H (Liquid spraying)	460	0.1	410	2	Rc3/8	S304: M5 (depth 8 mm) PVC: M5 (depth 10 mm)	490	4.3	1.3
	600		550		Rc3/8		630	5.5	1.6
	700		650	3	Rc1/2		730	6.4	1.9
	780		730		Rc1/2		810	7.1	2.1
	1,200	0.3	1,150	3	Rc1/2		1,230	11.0	3.1
	460		410	2	Rc1/2		490	4.3	1.3
	600		550	3	Rc1/2		630	5.5	1.6
	700		650	3	Rc1/2		730	6.4	1.9
SLNHA-H (Air spraying)	780	0.1	730	4	Rc1/2		810	7.1	2.1
	1,200		1,150	5	Rc1/2		1,230	11.0	3.1
	530	0.1	—	2	Rc3/8		560	5.0	1.5
	700		—		Rc3/8		730	6.5	1.9
	810		—	3	Rc1/2		840	7.5	2.2
	900		—		Rc1/2		930	8.0	2.5
	1,400		—	3	Rc1/2		1,430	12.0	4.0

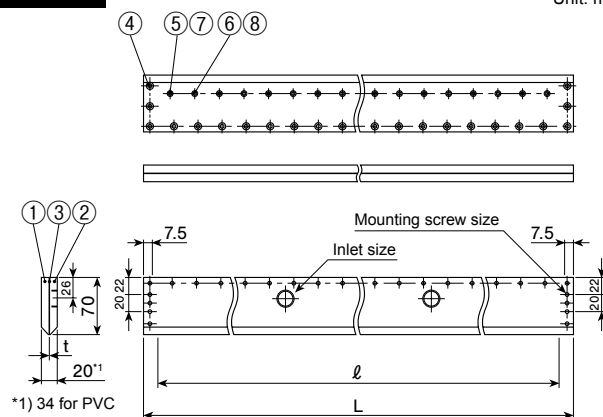
*2) S304: Customizable total length from 250 mm to 3,950 mm.

PVC: Customizable total length from 250 mm to 2,950 mm.

[Note] Appearance and dimensions are subject to change due to product improvement.

DRAWING

Unit: mm



- ① Body plate A (S304) ② Body plate B (S304) ③ Packing (PE)
④ Bolt [M5x10] (S304 equivalent) ⑤ Bolt [M4x8] (S304 equivalent)
⑥ Bolt [M4x10] (S304 equivalent) ⑦ O-ring [P4] (FKM) ⑧ O-ring (FKM)

The above drawing is of the stainless steel SLNH-H series with slit length of 1500 mm or less.

Series	Slit length (mm)	Slit opening (mm)	Spray capacity (L/min) ³								
			0.01 MPa	0.02 MPa	0.03 MPa	0.04 MPa	0.05 MPa	0.06 MPa	0.07 MPa	0.08 MPa	0.1 MPa
SLNH-H (Liquid spraying)	460	0.1	7.2	10.7	13.4	15.7	17.8	19.7	21.4	23.1	26.1
	600		9.4	13.9	17.4	20.5	23.2	25.7	27.9	30.1	34.1
	700		11.0	16.2	20.3	23.9	27.0	29.9	32.6	35.1	39.7
	780		12.3	18.1	22.7	26.6	30.1	33.3	36.3	39.1	44.3
	1,200		18.9	27.8	34.9	40.9	46.4	51.3	55.9	60.2	68.1
	460	0.3	21.7	32.0	40.1	47.1	53.3	59.0	64.3	69.2	78.3
	600		28.3	41.7	52.3	61.4	69.5	77.0	83.8	90.3	102
	700		33.0	48.7	61.0	71.7	81.1	89.8	97.8	105	119
	780		36.8	54.2	68.0	79.8	90.4	100	109	117	133
	1,200		56.6	83.4	105	123	139	154	168	181	204
SLNHA-H (Air spraying)	530	0.1	201	353	465	564	656	736	812	884	1,011
	700		265	466	614	745	867	972	1,072	1,168	1,335
	810		306	539	710	862	1,003	1,125	1,240	1,351	1,545
	900		341	599	789	958	1,114	1,250	1,378	1,502	1,717
	1,400		530	932	1,228	1,491	1,733	1,945	2,144	2,336	2,671

*3) • The above spray capacity indicates liquid flow rate for the SLNH-H series, and air flow rate for the SLNHA-H series.

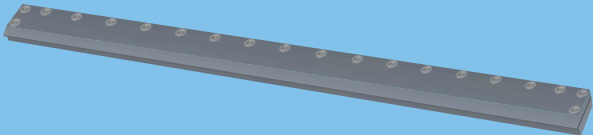
- The measure for air flow rate is L/min at normal conditions (0°C, 1 atm).
- The above spray capacities are for reference only and subject to design changes.

HOW TO ORDER

Total length can be tailored to your needs within the customizable range (see *2 above).
Inquiry drawing forms for each series and material are available to verify dimensional specifications.
Contact us for details.

These nozzle series are made-to-order.

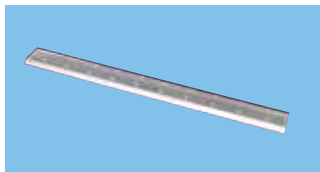
SLNH-K SERIES for Etching/Developing Made-to-Order

Picture	Features	Applications
	<ul style="list-style-type: none"> • Made of PVC. • Quick on/off spray response. • No bolts in the liquid flow path, ensuring smooth spray formation of a liquid film. 	<ul style="list-style-type: none"> • Developing solution coating • Etching solution coating • Water curtain

We offer a wide range of slit nozzles for air blowing. For more details, please refer to our Air Nozzle Catalog.

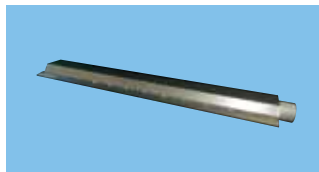
SLNHA-NA SERIES

No need to adjust the slit after maintenance, enabling self-maintenance.



SLNB SERIES

Blower-type air slit nozzle uses only one-third of the energy compared to compressed air nozzles.



SAP SERIES

Compact design, ideal for tight spaces. Can be used with either compressor or blower air.



VZ SERIES

Flat blow pattern with a wide angle. Steam spraying is also possible.

