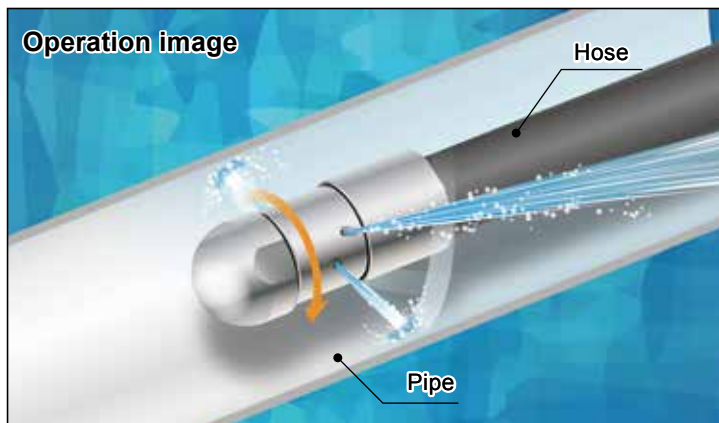


# High-Pressure Rotating Pipe Cleaning Nozzles

**RSP-R**



- Self-propelled in the pipe and rotating due to spray reaction force.
- Rotating solid stream jets with a high spray impact thoroughly clean the inner surface of a pipe.
- Compact design, made of special stainless steel with excellent wear resistance.

## [STANDARD PRESSURE]

1.0 MPa

## [APPLICATIONS]

Cleaning the inside of pipes, water and sewage drains, tubes of heat exchangers and cooling machines  
Removing scale and rust

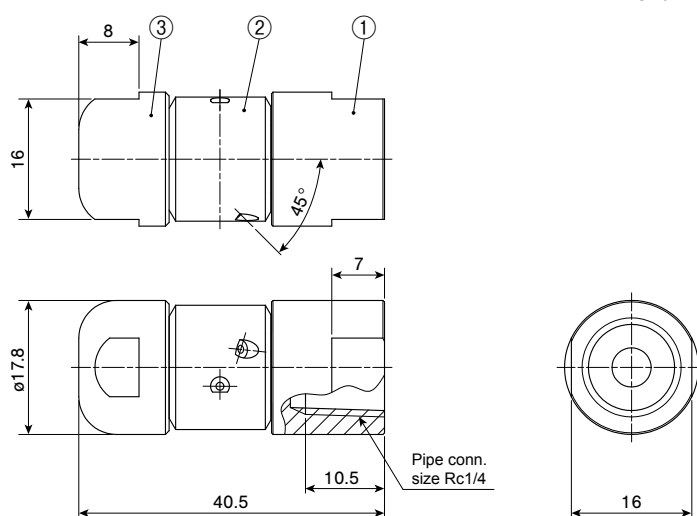
Structure	<ul style="list-style-type: none"> <li>• Made of metal.</li> <li>• Includes a connecting adaptor, nozzle body, and cap.</li> </ul>
Material	<ul style="list-style-type: none"> <li>• HS (Hardened stainless steel)</li> </ul>
Weight	<ul style="list-style-type: none"> <li>• 40g</li> </ul>

Max. temperature: 150°C

Max. operating pressure: 10.0 MPa

## DRAWING

Unit: mm

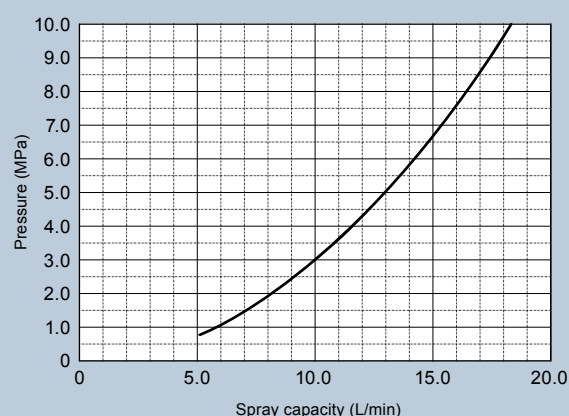


①Connecting adaptor ②Nozzle body (rotating part) ③Cap (bearing)

[Note] Appearance and dimensions may differ slightly depending on material and nozzle code.

Spray capacity (L/min)			
1 MPa	2 MPa	5 MPa	10 MPa
5.8	8.2	13.0	18.3

## FLOW-RATE DIAGRAM



## HOW TO ORDER

Please inquire or order using this product code.

**1/4F RSP 58R HS**

Pipe conn.  
size\*

Spray capacity  
code

Material

\*\*F" indicates female thread ("Rc" of the ISO standard), e.g. 1/4F = Rc1/4.