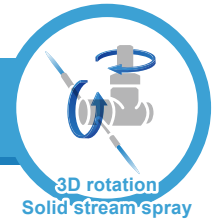


For cleaning hard to remove dirt

JET ATTACKER

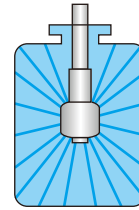
JA3 SERIES / Powerful 3D Rotational Cleaning



Cleaning hard to remove dirt



Spray Coverage



360° spray

Features

- Three-dimensional rotating solid stream jets powerfully clean the inside of a tank.
- No external power is needed as rotation is driven solely by the flow of the cleaning liquid.
- Simple structure, no turbine or reduction gears.
- Compact and lightweight, at less than 2 kg, with a maximum arm diameter of 240 mm, ensuring reliable cleaning.
- Available for low- and medium-pressure use. The JA3-2L series uses 0.3–1.2 MPa to clean with spray flow volume and the JA3-2S/4S series uses 1.0–3.0 MPa to clean with spray pressure.
- The JA3-2L/2S series is equipped with two nozzles, and the JA3-4S series with four nozzles.
- Easy to install, reducing equipment costs.

Applications

- Removing tough, sticky and stubborn dirt
- Cleaning of tanks for brewing, fermentation, distillation and storage, cleaning of transport containers

Basic Specifications

- Operating Pressure Range
JA3-2L (low-pressure use): 0.3–1.2 MPa (45–170 psi)
JA3-2S/4S (medium-pressure use): 1.0–3.0 MPa (150–430 psi)
- Spray Capacity²
JA3-2L: 23.4–84.8 L/min
JA3-2S: 11.8–35.3 L/min
JA3-4S: 23.6–69.3 L/min
- Reach Distance of Spray (Diameter)
JA3-2L: approx. 2–7 m
JA3-2S/4S: approx. 6–9 m
- Max. Temperature
60°C (140°F)

- Number of Nozzles Attached
JA3-2L/2S with two nozzles
JA3-4S with four nozzles
- Main Material¹
S304, SCS14, S303, PTFE, FKM, S440C
- Weight³
1.70–1.95 kg
- Rotation Speed⁴
30–60 rpm
- Outer Surface Finish
#320 buffing

▼ Watch rotating & spraying nozzle on YouTube

JA3-2L



JA3-4S



IKEUCHI JA

¹In the material code, "S" represents "stainless steel". SCS14 is cast stainless steel equivalent to S316.

²Spray flow rate in the above operating pressure range is for reference only. See the flow-rate diagram and chart for more details.

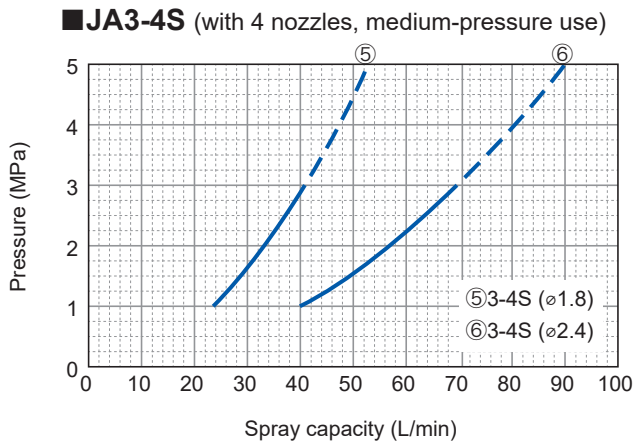
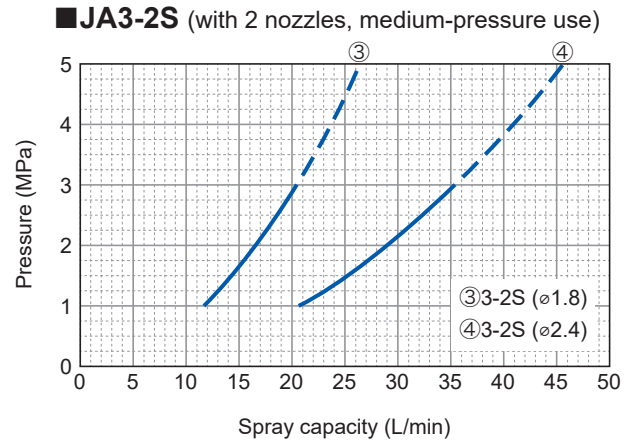
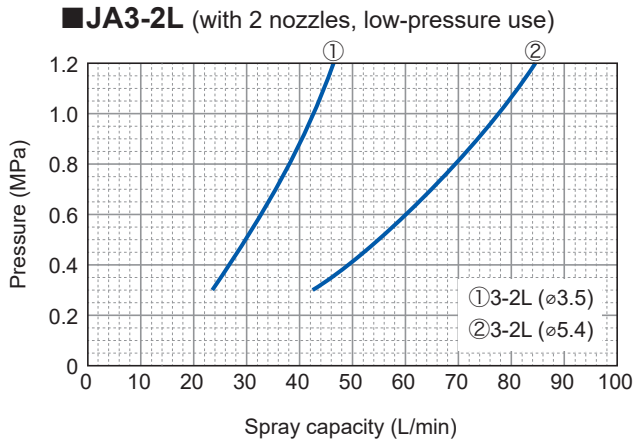
³See the table in the drawing section.

⁴Set to this range of rotation speed at a pressure specified prior to shipping. The rotation speed varies depending on the applied pressure.

JA3 SERIES / JET ATTACKER / Powerful 3D Rotational Cleaning

- The liquid pressure and spray flow rate should be set based on your specific applications and requirements.
- Two- and four-nozzle models are available, each with two options for the nozzle orifice diameter.
- The JA3-2S/4S models with their medium-pressure specifications are recommended for use at pressures of 1.0–3.0 MPa. When used at higher pressure, the rotation speed will become too high and the spray will become erratic.

Flow-rate Diagram



Flow-rate Chart

Model No. (JA...)	Number of nozzles	Nozzle orifice diameter (mm)	Pipe conn. size	Spray capacity (L/min) [for reference only]										
				0.3 MPa	0.4 MPa	0.5 MPa	0.6 MPa	0.7 MPa	1.0 MPa	1.2 MPa	1.5 MPa	2.0 MPa	2.5 MPa	3.0 MPa
3-2L (ø3.5)	2	3.5	Rc1/2	23.4	27.0	30.2	33.1	35.7	42.7	46.8	—	—	—	—
3-2L (ø5.4)	2	5.4	Rc1/2	42.4	49.0	54.7	60.0	64.8	77.4	84.8	—	—	—	—
3-2S (ø1.8)	2	1.8	Rc1/2	—	—	—	—	—	11.8	—	14.5	16.7	18.7	20.4
3-2S (ø2.4)	2	2.4	Rc1/2	—	—	—	—	—	20.4	—	25.0	28.8	32.3	35.3
3-4S (ø1.8)	4	1.8	Rc1/2	—	—	—	—	—	23.6	—	28.9	33.4	37.3	40.9
3-4S (ø2.4)	4	2.4	Rc1/2	—	—	—	—	—	40	—	49.0	56.6	63.2	69.3

Cleaning hard
to remove dirt

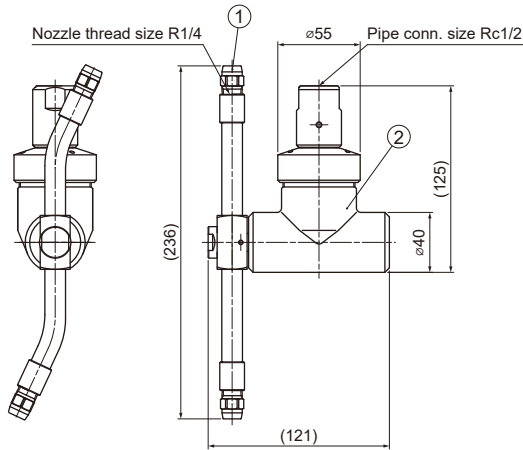
JA3 SERIES / JET ATTACKER / Powerful 3D Rotational Cleaning

Cleaning hard to remove dirt

Drawing

JA3-2L

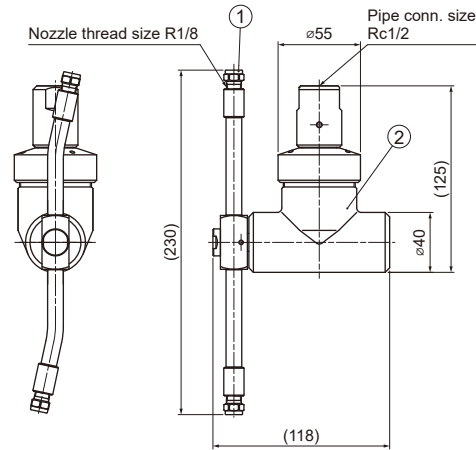
(with 2 nozzles, low-pressure use)



① Nozzle ② Body

JA3-2S

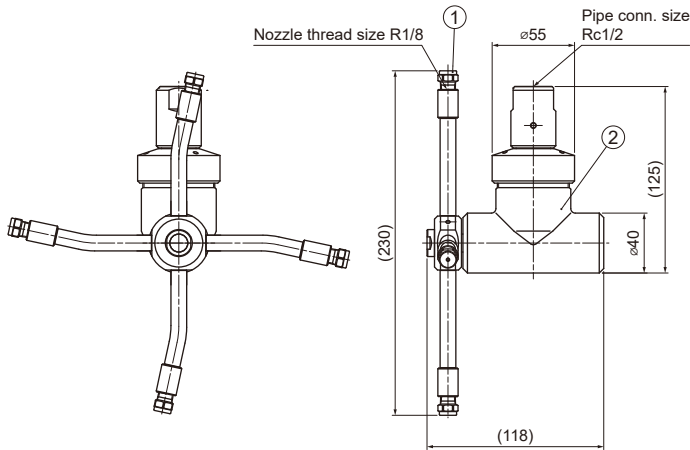
(with 2 nozzles, medium-pressure use)



① Nozzle ② Body

JA3-4S

(with 4 nozzles, medium-pressure use)



① Nozzle ② Body

Unit: mm



Download 3D/2D CAD file

■ Dimensions and weight

Series	Nozzle orifice diameter (mm)	Pipe conn. size	Nozzle thread size	Weight (kg)
JA3-2L	3.5	Rc1/2	R1/4	1.70
	5.4			
JA3-2S	1.8	Rc1/2	R1/8	1.60
	2.4			
JA3-4S	1.8	Rc1/2	R1/8	1.95
	2.4			

Note:

For the insertion, the JA3-2L/2S requires a 125A hole or larger and the JA3-4S requires a 200A hole or larger.

Upon ordering, please indicate your operating pressure from the range shown on page 25 for our pre-shipment rotation test and adjustment.

HOW TO ORDER

To inquire about or order a specific product please refer to this coding system.

JA3-2L for low-pressure use

Example: 1/2F JA 3-2L (ø3.5) S304

1/2F^{*5} JA 3 - 2L (ø3.5) S304

Nozzle Orifice Diameter

- ø3.5
- ø5.4

JA3-2S/4S for medium-pressure use

Example: 1/2F JA 3-2S (ø1.8) S304

1/2F^{*5} JA 3 - 2 S (ø1.8) S304

Number of Nozzles

- 2
- 4

Nozzle Orifice Diameter

- ø1.8
- ø2.4

^{*5} "F" indicates female tapered pipe thread ("Rc" of the ISO standard), e.g. 1/2F = Rc1/2.