

Instruction Manual

Products: Air Nozzles
HF Series

Thank you for purchasing this product.

Prior to use, read this manual carefully and familiarize yourself with the proper operation of the product for best performance.

H. Ikeuchi & Co., Ltd. takes no responsibility for any accidents and/or injuries resulting from improper handling, installation and/or operation.

After reading, keep this manual handy for quick reference.

Please be aware that due to continuing efforts to improve our products, some details in this manual may differ from the actual product.

H. Ikeuchi & Co., Ltd.

1. Precautions

(1) Installation Instructions

- Be sure to flush the pipes before installing the nozzle to remove any dirt and foreign matter.
- Apply sealant or sealing tape to the pipe thread on the adaptor before installation.
- Avoid installing the nozzle immediately on or after a bend in the pipe or an elbow. Turbulence may affect the nozzle performance.
- As the cap and adaptor are metal-to-metal sealed, no sealing tape or sealant is necessary between them.
- The caps are loosely hand-screwed for shipment.
After attaching the adaptor to the equipment/pipe, tighten the cap while checking the orientation of the nozzle tip (spray direction). See Table 1 for tightening torques.

Table 1. Recommended Tightening Torques

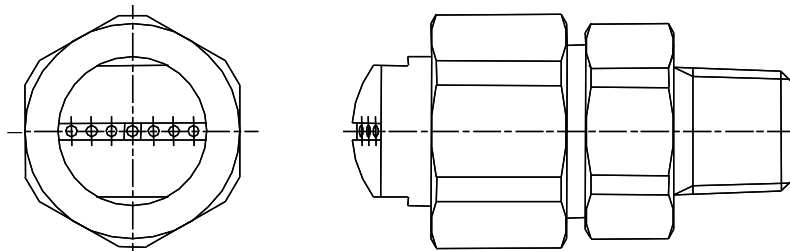
Adaptor thread size	Tightening torque (N·m)	
	Adaptor	Cap
R1/4	15	20
R3/8	20	20

(2) Handling Instructions

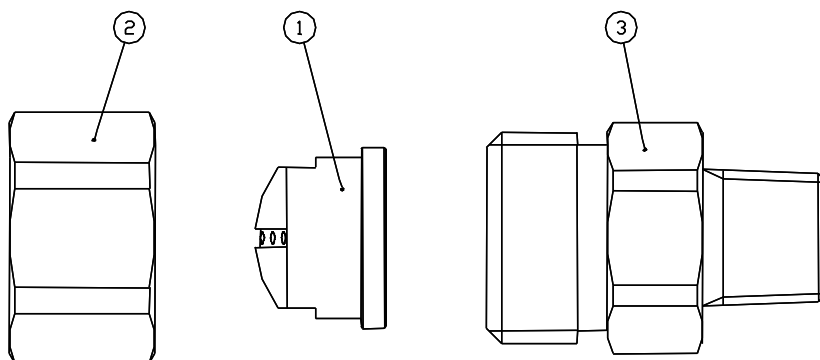
- Do not damage or scratch the nozzle.
Do not clean the nozzle orifice with nails, pins or other hard objects, which may damage the nozzle.
- Do not apply any strong force, shock or vibration to the nozzle.
- Store the nozzle in a clean, dust-free place.

2. Component of Nozzle

(1) Assembly



(2) Components and Materials



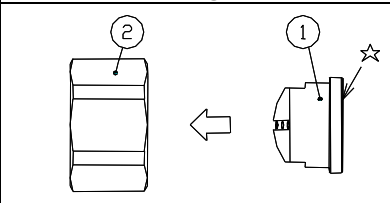
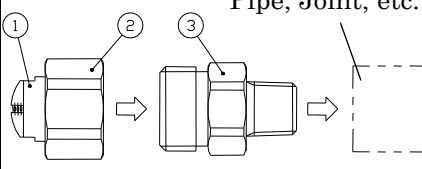
No.	Component	Material*	Remarks
1	Nozzle Tip	S303	
2	Cap	S303	
3	Adaptor	S303	

*Optional material: S316

Note:

- Appearance and dimensions may slightly vary depending on the nozzle code.
- In our material code, "S" represents "stainless steel". For example, S303 stands for stainless steel 303.

3. Reassembly

No.	Procedure	Diagram	Precaution
1	Insert the nozzle tip (part #1) into the cap (#2).		Before assembly, confirm that the surface indicated with ☆ is clean and undamaged.
2	Screw the adaptor (#3) into the pipe with the specified tightening torque. Check the spray direction of the nozzle tip (#1), then tighten the cap (#2) with the specified torque.		<u>Tightening torque</u> Adaptor: 15 N·m for R1/4 20 N·m for R3/8 Cap: 20 N·m

Note: Shapes may differ depending on nozzle codes.

4. Disassembly

- (1) Disassemble in the reverse order of 3. Reassembly above.
- (2) Disassemble the nozzle in a clean, dust-free environment.

Always clean the nozzle surface before disassembly to prevent any dust and dirt from entering the nozzle. Be careful not to lose any parts.

5. Troubleshooting

If there is a problem, please check the following items first. If the problem persists, please replace the nozzle.

Problem	Possible reason	Solution
No air blowing, or irregular blow pattern.	Nozzle is clogged.	1. Clean with ultrasonic cleaner and air blower. 2. Replace the nozzle tip (#1).
Air leakage	Sealant or sealing tape is damaged or worn.	Replace the sealant or sealing tape.
	Nozzles are not screwed in tight enough.	Tighten the nozzles properly with a torque wrench.