

Instruction Manual for Inline Check Valve

Inline Check Valves can be easily damaged.
Please follow the steps below for installation.



Wear safety gloves.

Screw threads, edges and corners may be sharp and could cause injury.

I. Specifications

Max. operating pressure: 1.0 MPa

Cracking pressure: 0.04–0.05 MPa

Closure pressure: 0.02–0.03 MPa

II. Installation

1. Be sure to flush the pipes before installing the inline check valve to remove any dirt and foreign matter.
2. Apply sealant or sealing tape to the thread of the check valve or of the pipe.
3. When installing the check valve, pay attention to the direction.
4. First, hand-tighten the check valve and then use a tool to finish tightening it with the recommended torques shown in Table 1.
5. Do not apply any shock or strong force to the check valve.

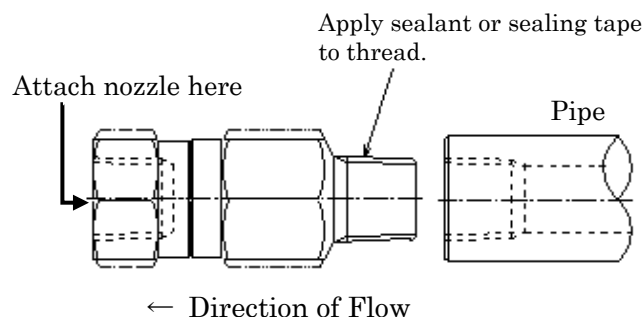


Fig. 1

Table 1. Tightening Torques

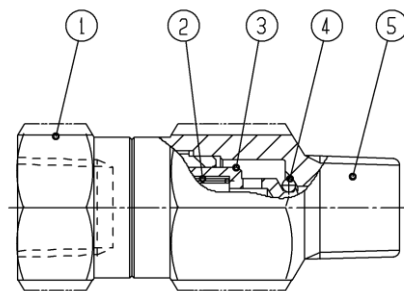
Thread size	Tightening torque (N・m)
1/4	15
3/8	20
1/2	40
3/4	60
1	100

III. Handling Instructions

1. Inspect the check valve regularly for clogging.
2. In case of any foreign particles deposited inside, follow the disassembly, cleaning, and assembly procedures on the next page to remove them.

IV. Disassembly, Cleaning, and Assembly

1. Use a spanner or similar tool to remove the nozzle body (#5) and socket (#1).
2. The poppet (#3) and compression spring (#2) are inserted into the socket (#1) with a clearance fit. If they become detached from the socket, first insert the compression spring (#2) into the spring-insertion seat within the socket (#1), and then insert the poppet (#3) into the socket (#1). Refer to Fig. 3.



No.	Parts
1	Socket
2	Compression Spring
3	Poppet
4	O-ring
5	Nozzle Body

← Direction of Flow

Fig. 2 (Component Structure)

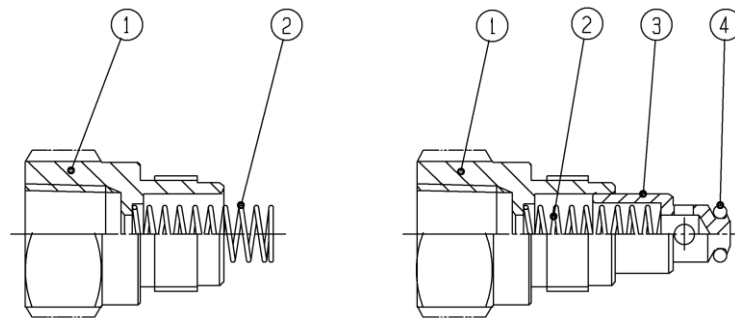


Fig. 3

3. After removing any foreign particles from the inside, use a cloth to wipe off the parts marked with ☆ and ☆☆ in Fig. 4 clean. Additionally, ensure that the O-ring (#4) on the poppet is free from scratches or damage.

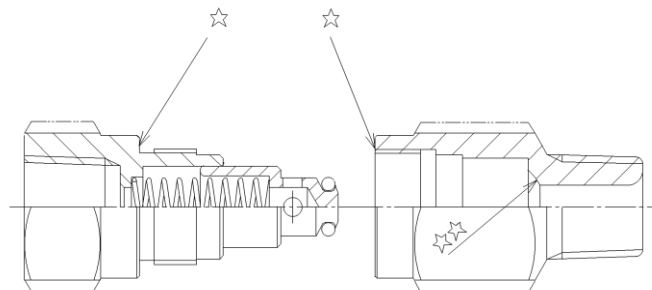


Fig. 4

4. Insert the socket (#1) with the compression spring (#2) and poppet (#3) mounted into the nozzle body (#5). First hand-tighten it, then finish tightening with a spanner.