

H. Ikeuchi & Co., Ltd.
Nishiwaki Horii Factory, Japan

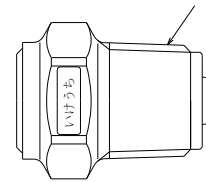
Instruction Manual for Plastic Spray Nozzles:
1/8M JJXP2*75/2 PVC and 1/8M BBXP030 PVC-IN

Plastic nozzles are more breakable and far more fragile than metal nozzles.
Please handle them with care and follow the instructions below.

I. Installation Instructions

1. Be sure to flush the pipes before installing the nozzle to remove any dirt and foreign matter.
2. Apply sealant or sealing tape to the thread of the nozzle.
3. ONLY hand-tighten plastic nozzles. DO NOT use ANY tools on them.
4. Do not apply any shock or strong force to the nozzle.

Apply sealant or sealing tape to threads.



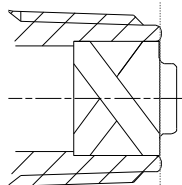
II. Assembly Instructions

The whirler in the nozzle is detachable to remove any dust or foreign particles from the inside.

To extend the life of the nozzle, please follow the steps below:

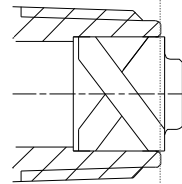
1. Use pliers to detach or attach the whirler.
2. Insert the whirler into the nozzle body correctly.

Correct



When correctly set, the whirler is positioned deeper than the rear end of the nozzle body as shown in the figure.

Wrong



III. Handling Instructions

1. Check the nozzle orifice regularly for clogging.
2. If the nozzle is clogged, remove it from the pipe and clean out the clog with a soft brush.
3. Do not attempt to clean the nozzle tip/orifice with nails, pins or other hard objects. This will damage the nozzle.

